



WOODLANDS PRIMARY SCHOOL P&C

**Parents and Citizens Association Inc.
General Meeting – Budget Meeting
23 March 2026 at 6:30pm – School Library**

Link included for those unable to attend in person: [Join the meeting now](#)

MEETING MINUTES

1. Attendance

Deb Lyon, Mireille Hardie, Brad Angel, Chelsea O’Riordan, Laura O’Hara, Glenda Yow, Emma Lister, Kristen Fletcher, Sam Curran, James Foreman, Rachel Thorogood, Bec Stokes

2. Apologies

Joanne Smith

3. General Welcome – President’s Report

As an ACNC registered charity any member who has a conflict of interest in arising matters must disclose it at an appropriate time whilst in discussion and will be unable to vote on any matter on which they have a personal interest.

Motion: To approve meeting minutes from the last meeting (on 23rd Feb 2026)

Seconded: Brad Angel

Approved: All

Against: Nil

Abstaining: Nil

4. Treasurer Report

Not applicable – treasurer report in week 4 meeting.

5. Principal’s Welcome and Report

- Basil Zempilas invited to attend Term 2 meeting – to send minutes and agenda following this meeting
- Community use of facilities grant approved – repair basketball courts, storage sheds \$82,421
- Substation power upgrade meeting – preliminary work commencing this week happening until school holidays with main work happening during holidays
- New manager of corporate services – Tina Agostino, full time permanent from Term 2
- Jo Smith has been appointed Deputy Principal for remainder of this year
- Application process to replace 3x maternity leave staff members currently occurring

Motion: To approve the principal’s report (from meeting today on 23/3/26)

Seconded: Deb Lyon

Approved: All

Against: Nil

Abstaining: Nil

6. Fundraising Discussion

Term 1:

- Colour Blast on 13th March 2026 recap - \$7900 raised
- Easter Raffle and Picnic on 27th March 2026 - \$1100 raised so far; Elizabeth Re to draw raffle; easter eggs will be handed out in week 9; pre-primary bake sale
- Movie Fundraiser – The Faraway Tree 10:30am Saturday 28th March 2026 – community event

Term 2:

- Mothers Day Movie and Drinks – The Devil Wears Prada Wednesday May 6th 2026 - generous donations from community
- Adults Night – Saturday 27th June

Term 3:

- Faction Carnival Lunch and Bake Sale – Friday 4th September 2026; Year 4 cohort
- School Disco – Friday 11th September 2026; Year 3 cohort
- Interschool Athletics Carnival – Wednesday 16th September 2026, whole school to assist organise but year 5 to supply bake sale.

7. Budget Items:(Submitted by school): P&C parent contributions to school for IT

Ongoing to 2027 – agreed upon for 3 years 2025-2027 from previous committee. All P&C Contributions go towards the school IT services.

(Submitted by parent): Replace school entrance sign

Sign at front of school is old and could benefit from replacement

One quote: \$2475

(Submitted by parent): Purchase and install new steel table tennis table

Various prices depending on design – Company – Public Outdoor PTY :

\$10K to \$13 + \$500 delivery

\$200 for accessory pack

(Submitted by parent): Cricket nets at back of oval:

Repair concrete and lay new synthetic turf – life of 20 years = \$5923

(Submitted by parent): Replace chain link fencing on cricket nets:

Replace metal fencing around cricket net structure as currently unsafe – TBC awaiting quote approx \$5000

(Submitted by school): New multipurpose sports net for volleyball/badminton etc.

Previous net used for sports classes has come to the end of its life

Victor Sports \$481.14 (includes delivery)

(Submitted by school): New roll out gym mats for sport and Dance Dazzlers:

Requesting purchase of two roll out gym mats to make setting up for sports classes and Dance Dazzlers much more streamlined.

3 quotes:

Cheer Equipment - \$299 / mat + \$131 shipping = \$728

Gymnastics direct - \$299 / mat + \$170 shipping = \$768

Southern Cross Mats - \$409 / mat + \$353.60 shipping = \$1171.60

(Submitted by school): Purchase of an additional 9 worm farms:

This would enable every classroom to have their own worm farm as part of green team initiatives

Reduce food waste from school lunches, have sustainability initiatives in the classroom, learn about decomposition and take responsibility for living system.
Additional 9 worm farms and starter kits = \$1415

(Submitted by school): Resilience Project work books

As part of Resilience project brought to school this year each student needs to have their own resilience project workbook = \$4290
School has funded initial outlay of overall program and teacher training

(Submitted by school): Replace benches outside kindy area and create nicer space with trees, retic, green space etc..

= \$4000

(Submitted by school): Paving between ECE classrooms and oval

Install paving from ECE classroom to oval doorways
= \$12000

(Submitted by school): Replace mats in undercover area and provide mats for rooms

12/13/14

= \$2000

(Submitted by school): Lawn care and maintenance

Ongoing maintenance of school oval including additional works of weed removal, fertilising, aeration etc..
= \$18000

(Submitted by school): Install doorway at end of rooms 12/13/14 undercover area

Install open doorway at end of rooms 12-14 classroom block to make better air flow for children.
= \$10000

Discussion:

All above items were discussed by those present at the meeting. P&C constitution states that funds should be spent on items that will benefit the school children.

Items removed from spending list following discussion as unanimous vote from people in attendance at meeting.

- Entrance sign - is not for the benefit of the school children despite agreeance this could do with an update.
- Table tennis table - large expense, only a few children can use at a time, concerns over balls and bats getting lost, likely vandalism on table due to outside location.
- Cricket nets, cricket net chainlink – positive response to this however we are looking into larger scale grant with an option to put cricket pitch in middle of oval. This would allow for more children to use and be involved. Cricket nets only enable a few children at a time to be practicing.
- Paving between ECE classrooms and oval – needs more thought and to be looked at as part of a bigger picture item with a possible verandah. Need to consider minimising loss of green space.
- Room 12-14 doorway – idea agreed upon however needs more thought from original quote due to considerations for this becoming a wind tunnel, letting in rain during winter. Need to consider other options for design and not the steel bars which is what is currently quoted.

The following items – those remaining on the list were then prioritised in order of spending based on when funds are raised through the P&C fundraising initiatives.

1. Resilience Project Books \$4290

2. Volleyball nets \$500
3. Gym mats \$800
4. Worm farms \$350
5. Autumn/Winter/Spring Lawn Maintenance \$3000
6. Undercover mats \$2000
7. Kindy benches \$4000
8. Summer 26/27 Lawn Maintenance \$6000

8. General Business

Grants Application Update (James Foreman)

- James and Rachael have been investigating a planting grant which would allow for a revamp of space in front of path close to library block.
- \$10,000 available for landscaping to plant trees and add boulders to garden at side of library – plan attached to minutes.
- If successful, school would need to organise purchase and planting of the trees. Likely organise a busy bee.
- Option to apply for further landscaping / planting grants in future so would look to do kindy space next.

Motion: To remove budget item from 2023 for P&C shelving of \$1000 and allow for this money to come back into circulation for 2026 expenditure.

Seconded: Sam Curren

Approved: All.

Against: Nil

Abstaining: Nil

9. Next Meeting

Week 4, Term 2 – Monday 11th May

10. Closure – 8:26pm



24/3/2026

Debra Lyon – Signature and Date

Chairperson & P and C President

Site - Woodlands Primary School
 Corner of Bentwood and Teakwood Ave



Photo 1



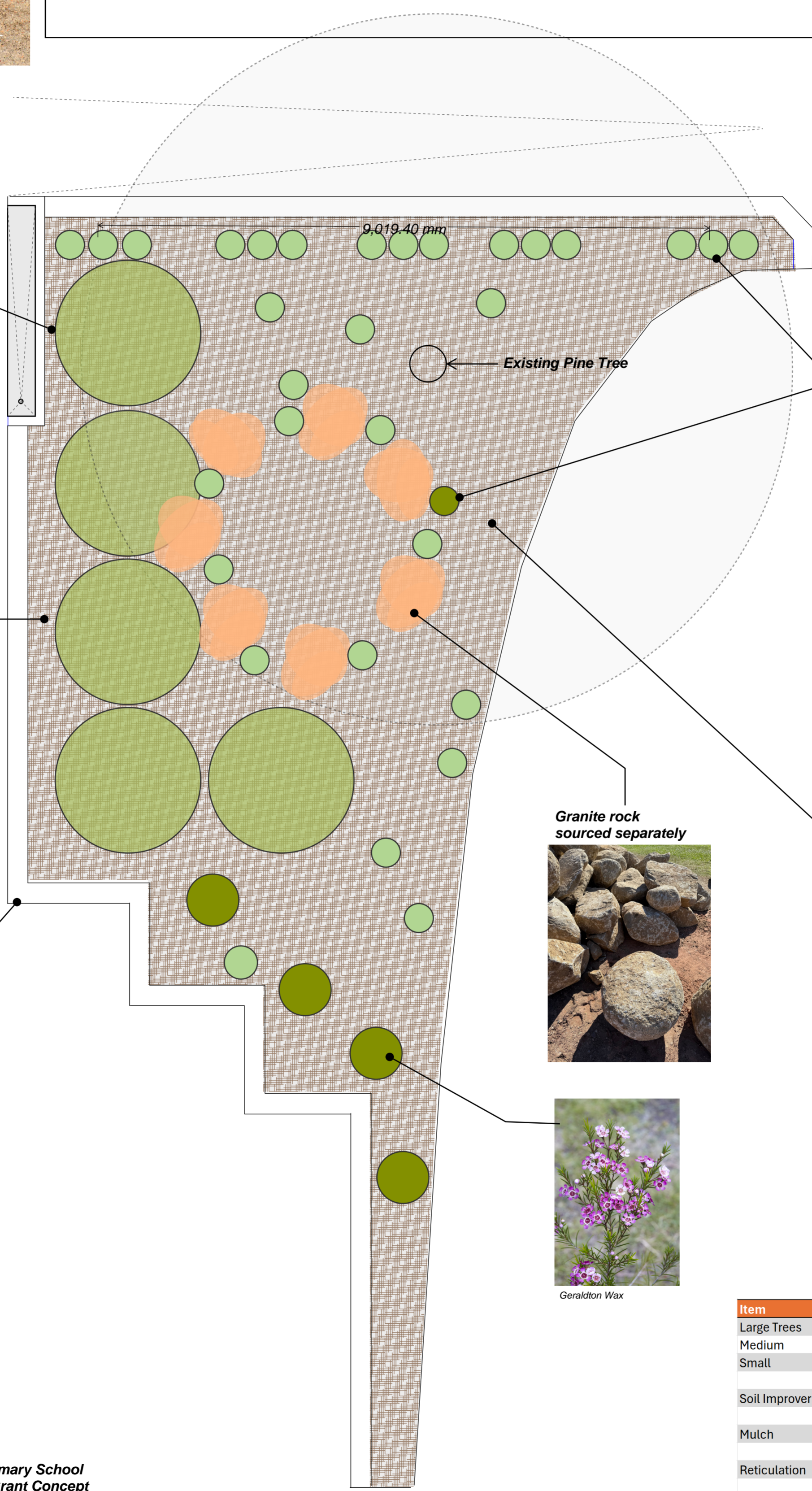
Photo 2



Paper barks - selection to be confirmed

Approx 90m² of garden bed.

Existing limestone retaining wall



Low ground cover or shrubs



Kangaroo Paw



Blue Horizon™ Eremophila glabra prostrate 'EREM1' PBR



Mulch to extent of garden bed

Granite rock sourced separately



Geraldton Wax

Item	Qty	Cost per unit	Total
Large Trees	5	500	\$2,500.00
Medium	40	40	\$1,600.00
Small	15	25	\$375.00
	60		
Soil Improver	60	15	\$900.00
	m2		
Mulch	95	20	\$1,900.00
	Lm		
Reticulation	40	25	\$1,000.00
			\$8,275.00
		5% Contingency	\$413.75
		Grant Requestes	\$8,688.75

