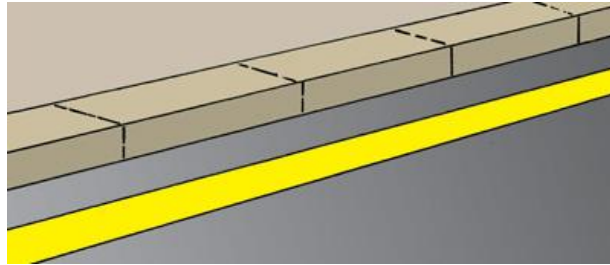


# PARKING FACT SHEET

## NO STOPPING AREAS

No Stopping areas can be defined by signage or a continuous yellow line painted along the edge of a carriageway. A driver shall not stop on a length of carriageway, or in an area, to where no stopping restrictions apply. Vehicles may only stop in these zones to comply with other regulations (for example at traffic lights or to avoid an accident). Drivers are not permitted to drop off passengers or goods in No Stopping areas.



## NO PARKING AREAS

A driver shall not stop on a length of carriageway or in an area to which a “no parking” sign applies, unless the driver —

- (a) is dropping off, or picking up, passengers or goods; **and**
- (b) does not leave the vehicle unattended; **and**
- (c) completes the dropping off, or picking up, of the passengers or goods within two minutes after stopping.

No parking sign  
(for a length of carriageway)



## VERGE PARKING

To park on a street verge or nature strip, permission from the owner or occupier of the property immediately adjacent to the verge must be given. Signage may be installed to restrict or prohibit verge parking and must be adhered to regardless of whether permission by the owner or occupier has been given. These signs apply to all drivers including those of the residence.

# PARKING FACT SHEET

## ADVERTISING VEHICLES FOR SALE IN A PUBLIC PLACE

Vehicles cannot be advertised for sale in public places including, roadways, median strips and verges regardless of whether they are parked legally. Vehicles advertised for sale in public places are generally parked in highly visible locations that can distract drivers and obscure the vision of other motorists.

## FACING WRONG DIRECTION

Parking against the flow of traffic is illegal in Western Australia and can be hazardous, particularly when exiting from the parking place. At all times you are required to park or stop your vehicle so it faces the same direction as the flow of traffic.

## PARKING NEAR CORNERS

Vehicles may not park within 10 metres of a corner where no traffic lights exist, diagram (a).

Vehicles may not park within 20 metres from a corner at which traffic lights are installed, diagram (b).

This area must be kept clear so other road users have a clear view when approaching and leaving. Vehicles that are parked too close to a corner pose a danger to other road users negotiating the corner. In particular trucks and buses that need this area to negotiate the turn safely.

Diagram (a)

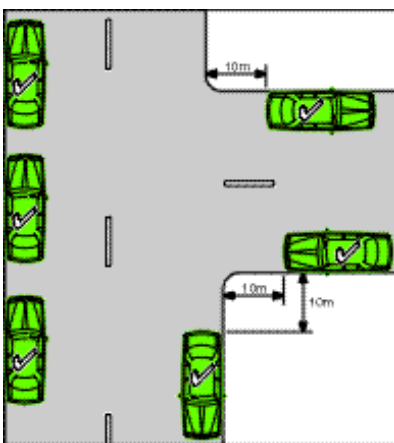
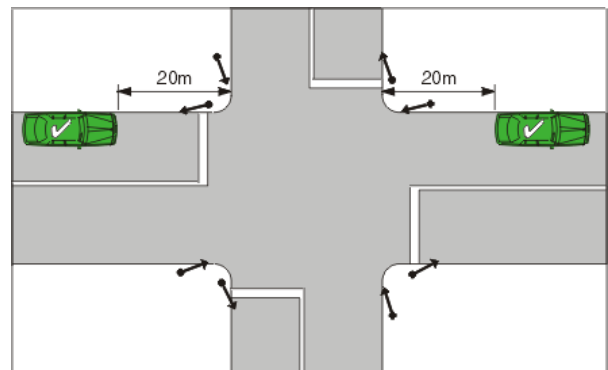


Diagram (b)

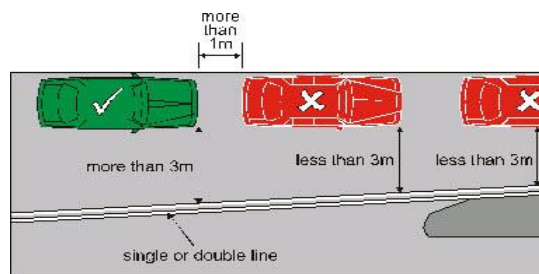


# PARKING FACT SHEET

## PARKING ON A CARRIAGEWAY

If the carriageway has a continuous dividing line, dividing strip or a median strip, the driver of a vehicle shall position the vehicle at least 3 m from the continuous line, dividing strip or median strip, unless otherwise indicated by information on or with a parking control sign.

*Parallel parking — minimum distance from other vehicles and dividing strip*



In the example, the vehicles marked with an 'X' are parked in contravention of legislation.

## MEDIAN STRIP PARKING

Median strips are used to divide traffic flow and enhance safety on busy roads. Vehicles are not permitted to park or stop on any median strip regardless of whether signs have been installed.

## STOPPING NEAR FIRE HYDRANT

A driver shall not stop a vehicle so that any portion of the vehicle is within one metre of a fire hydrant or fire plug, or of any sign or mark indicating the existence of a fire hydrant or fire plug unattended. A white 'H' road marking indicates the existence of a fire hydrant.

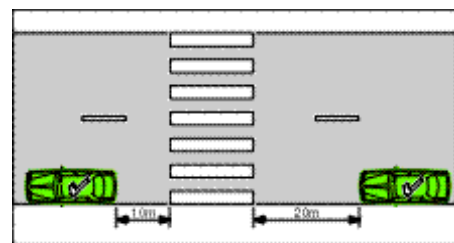
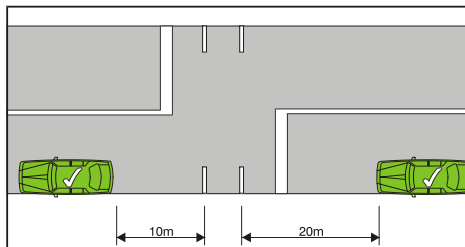
## FOOTPATHS

Footpaths provide pedestrians with a safe alternative to walking on roads. By parking vehicles blocking any portion of the footpath, including the crossover (where your driveway and the footpath meet), pedestrians may be forced onto the road. This can be both frustrating and dangerous for pedestrians, especially people with prams, people with disabilities and young children. No portion of a vehicle is permitted to park so that any portion of the vehicle is on, over or in front of a footpath.

# PARKING FACT SHEET

## PARKING NEAR PEDESTRIAN CROSSINGS

A person must not park a vehicle so that any portion of the vehicle is within 20 metres of the approach site, or within 10 metres of the departure side of a children's crossing or pedestrian crossing. – (this includes school crossings) regardless of whether there are any signs or lines.



## PARKING NEAR BUS STOPS

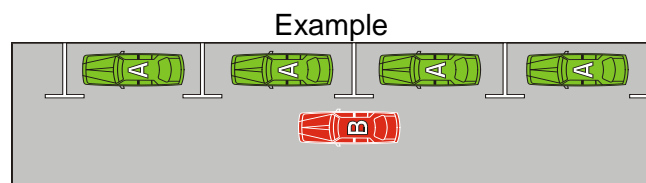
A driver must not park a vehicle so that any portion of the vehicle is within 20 metres of the approach site, or within 10 metres of the departure side, of -

- (a) a sign inscribed with the words 'Bus Stop' or 'Hail Bus Here' (or with equivalent symbols depicting these purposes) unless the vehicle is a bus stopped to take up or set down passengers; or
- (b) a children's crossing or pedestrian crossing

**bus** means a motor vehicle, built mainly to carry people, that seats over 12 adults (including the driver)

## DOUBLE PARKING

A driver must not stop a vehicle so that any portion of the vehicle is between any other stopped vehicle and the centre of the carriageway.

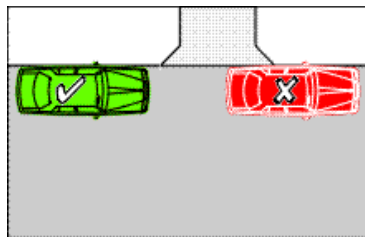


In the example, the vehicle B is stopped in contravention of this regulation.

# PARKING FACT SHEET

## OBSTRUCTING ACCESS TO A DRIVEWAY

A driver shall not stop a vehicle so that any portion of the vehicle is in front of a path, in a position that obstructs access by vehicles or pedestrians to or from that path.



## PARKING AREAS/BAYS

When parking a vehicle in a thoroughfare or parking area the vehicle must be parked wholly within a bay. Where the parking bay is set out parallel to the kerb the vehicle must be parked as close to the kerb as is practicable and be facing in the direction of the movement of traffic on the side of the thoroughfare in which the bay is situated. If a vehicle is too long or too wide to fit completely within a single parking bay then the person parking the vehicle must do so within the minimum number of parking bays needed to park that vehicle.

## ACROD PARKING

ACROD parking bays are reserved for people with disabilities that have a valid ACROD permit. These parking bays are placed in the most convenient locations and as such are preferred parking spots. Regardless of how long you intend to park and whether other ACROD parking is available, Non-ACROD permit holders are prohibited **unconditionally** from parking in these bays.

Disabled Parking Sign / Road Marking





# PARKING FACT SHEET

---

## COMMERCIAL VEHICLE PARKING

### Stopping on a carriageway – heavy and long vehicles

Unless engaged in the picking up or setting down of goods, a person must not park, on a carriageway for any period exceeding one hour, a vehicle or any combination of vehicles, that, together with any projection on, or load carried by, the vehicle or combination of vehicles, is 7.5 metres or more in length or exceeds a GVM of 3 tonnes.

### Commercial Vehicles parking on a verge

Commercial vehicles may park on a verge provided that no obstruction is caused to the passage of any vehicle or person using a carriageway or a path. The Commercial vehicle must also be actively engaged in loading or unloading goods delivered to or collected from the premises adjacent to the verge on which the commercial vehicle is parked. If the verge has restrictive signs installed the signage must be adhered to.

### Commercial vehicle means –

- (a) a motor vehicle constructed for the conveyance of goods or merchandise, or for the conveyance of materials used in any trade, business, industry or work whatsoever, other than a motor vehicle for the conveyance of passengers; and*
  - (b) includes any motor vehicle that is designed primarily for the carriage of persons, but which has been fitted or adapted for the conveyance of the goods, merchandise or materials referred to, and is in fact used for that purpose.*
- 

## LOADING ZONES

Loading bays are sign posted and marked by yellow lines (either continuous or dashed) and are reserved for Commercial vehicles that are engaged in the pick up or setting down of goods. Commercial vehicles must not remain in that loading zone - for longer than a time indicated on the 'loading zone' sign or for longer than 30 minutes if no time is indicated on the 'loading zone' sign.



# PARKING FACT SHEET

## CLEARWAYS

Clearways are sections of roads where vehicles cannot stop during certain times and are designed to allow an uninterrupted flow of traffic during peak traffic periods. Vehicles parked within these areas during restricted times create a dangerous situation for other motorists and can cause a large amount of traffic congestion in a short period of time. Accordingly, significant penalties apply for stopping in a Clearway.

Parking in these areas may be permitted up until times indicated on the Clearway sign. When parking in areas where Clearways apply take note of the restrictive times and ensure you do not stop your vehicle during restricted periods.



CLEARWAYS are generally used for extended lengths of road and are usually applied during peak hour times (7:30am to 9.00am and 4:15pm to 6.00pm).